



Lanka Alzheimer's Foundation

Formerly known as Alzheimer's and Related Disorders Foundation of Lanka
(An Approved Charity - Gazette Notification No. 1225 Dated 22 02 2002)

Annual Report 2010/2011



Helpline +94 11 266 7080

Content

Donors	2	Report of the Auditors.....	8
Founder/President's Report	3	Balance Sheet	9
Services	4 & 5	Income and Expense Statement	9
Year in Review	6 & 7	Notes to the Financial Statements.....	10 & 11
Treasurer's Report.....	8	Stewardship of your Money	11

Mission:

“To do all that is possible to improve the quality of life of those with Alzheimer’s disease and related dementias and support their families and carers to cope with the challenges generated by those conditions”

Donors — 01 April 2010 to 31 March 2011

Sri Lanka

A Indrasenan
A R Gunawardena
A T W P Jayawardene
Ajith Dias
Anopriya Palihena
Anthony & Pat Page
Anusha Navaratne
Anushika Kuruppu
Arun & Julian Dias Bandaranaike
Buweneka de Silva
Cheryl de Fonseka
D V H de Mel
David Hills
Deepa Chatulani
Deidre & Ganesh Cadiramen
Desi Hirdaramani
Dharmin Perera
Diana Captain
Druki Martenstyn
Dulcie Wijenaikie
E D Abayasekara
Eric & Gillian Mailler
Erica Fernando
Frank & Lilamani Weeraratne
George Ondaatje
Gina Ferdinands
H V Perera
Indi & Gamini Hettiaratchi
Isvari Mahadeva
Janak & Mona Hirdaramani
Jayantha Jayawardena
John & Brenda Brennan
Joseph Robin Ward
Jude de Silva
L S Selvaratnam
L Wijeyekoon
Lin Yu Chun
Lucien & Manelle Ratnayake
Luxman Jayaratne
M F F Caffoor
Manik de Silva
Minoli Wijesena
Minusha Wickramarachchi
Mohini Wijenaikie
Nadhini de Silva
Nicola Bolling
Noel & Kaarina Wickremaratne
Norma & Jean Pierre Swyngedauw
Norma de Silva
Priath Fernando
R. Rahaman
Ravi Pereira
Ren Lan Mather
Rohan Balasuriya
Rohini Abey Suriya

Rohini Nanayakkara
Roshni de Fonseka
Sadhana Vikrantha
Sepalika & Ranjit de Alwis
Shantani Perera
Siromi Rodrigo
Sonali Fernando
Srimanie Wickramasinha
Sue & Richard Vokes
Sunethra Bandaranaike
Suzie Hindle
Theruni Ratnatunge
Tyronne Paiva
Upeka & Lalani Alwis
Vindya Ratnavibushana
Vinodh Wijetunga
Wickrema de Alwis
William Ariyaratjah
Yasmin Raheem
Yaso Gunawardana
Zuraika Kamil

Abu Dhabi

Dinesh Renganathan

Australia

Mahendra & Nelun de Silva
P C A Handy
Rex & Sarojini Fernando

Canada

A S G & C J U Peiris
Bertie & Myrna Mendis
Kathir & Renuka Balachandran
Lynn Beattie
Margot Steward
Mary Marsh Mcwhinney
Members of the Toronto Zen Centre
Niranjan & Sarah Balachandran
Rani & Mohan Jhooty
Ranjith Chandrasena
Ruby & Rupinder Banwait
Taigen & Bonnie Henderson

France

Marion Goshawk & Nimal Seneviratne
Vladimir Tamitegama & Florence Akoun

Spain

Nisha Daswani

Sweden

Michael & Shalika Lofdahl

UK

Friends of the Lanka Alzheimer’s
Foundation
Indrani Thambiah
Kanthi Ariyarat
Ken & Elaine Cordner
Leonie Sturrock
M B J Tissainayagam
Noel Hensman
P. Obeysekera
Ruwani Wijekoon
Sherine Fernando
Vino Ramachandra
Wende Hall

USA

Carmen Varley
Deepika Walpita
Dilanthi Fernando

Corporate

Abans Office Automation (Pvt) Ltd.
Aksa Consulting (Pvt) Ltd.
C T Smith Stock Brokers (Pvt) Ltd.
Ceylinco Insurance Plc
Ceylon Tea Marketing (Private) Ltd.
Colombo Stock Exchange
Commercial Bank of Ceylon Plc
Girls High School Kandy – Alumni
Association Colombo Branch
International Expatriate Association
J-Cey-Tea (Private) Ltd.
Lanka Walltile Plc
Mc Callum Trading (Pvt) Ltd.
National Development Bank Plc
North American Womens Association
St. Andrew’s Scots Kirk
Star Packaging (Pvt) Ltd.
Tempserve
The Colombo Hash House Harriettes
The Overseas School of Colombo
Tudawe Brothers (Pvt) Ltd.
Vaitilingam & Co. Ltd.
Vinik (Private) Limited

Trusts

CIC Charitable and Educational Trust Fund
Jacob De Mel Trust
Maharaja Organisation Charitable Trust
Mr. & Mrs. Walter Laduwahetty Trust
Muriel De Soysa Trust
N H A G Charitable Trust

Mission:

“To provide sustainable information and practical modalities to those reaching their senior years, to maintain the rigors of healthy living and commit to stay engaged in active ageing throughout those years”

Founder/President's Report



March 2011 marks the completion of the 10th year of sustained service provided by the Lanka Alzheimer's Foundation. It is my privilege to review those years, with a sense of awe and gratitude for the mix of good fortune and challenge encountered throughout.

It was at the Alzheimer's Disease International (ADI) 2nd Asia Pacific regional meeting, which was held in Singapore in 1999 that I was given the assignment to introduce the dementia syndrome to the Sri Lankan community in a formal way.

Naively, my wife Lorraine and I scouted around the Colombo business and lay community to garner support for the development and registration of the fledgling organization, Lanka Alzheimer's Foundation (LAF). We drew a blank. One of the Founding Trustees recommended that we should 'go it alone', so we did. Incorporation, registration as an NGO, approved charity status, and full membership in ADI were obtained within the next two years.

Lessons learned and practical information gathered from the worldwide membership of ADI provided the framework for setting up basic services in our own home, which became the centre of activity throughout the last ten years. Raising awareness of the realities of Alzheimer's disease and related dementias (collectively known as dementia), became the cornerstone of the work undertaken by the few volunteers who were carrying the Foundation's flag consistently.

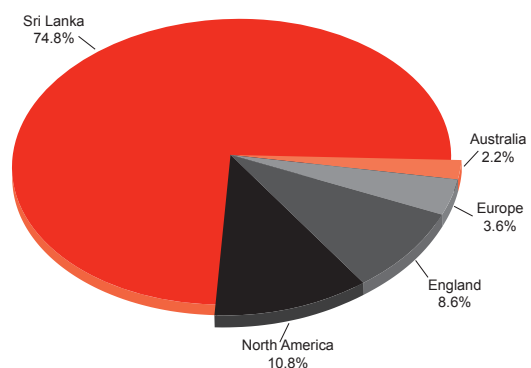
One remarkable resolution made by the Trustees in the early years relating to the establishment of a permanent home for the Foundation, bore fruit in short order. A meeting with two Trustees of the Ceylon Social Service League (CSSL), and their willingness to cooperate resulted in a thirty nine month struggle to renew a dormant Crown Lease on a property in the heart of Colombo. That property, housed a crèche for many years, the first of its kind in South East Asia, and it was inaugurated in 1937.

His Excellency the President signed off the lease renewal in 2007, in favour of joint tenants – CSSL and LAF. A subsequent agreement between CSSL

and LAF enabled LAF to proceed with the establishment of a Service Centre.

The next chapter of the story is one of deep commitment to establish support for persons with dementia and their carers. We gathered that seniors are extraneous to development; consequently, fund raising became a compelling challenge. Quite unwittingly, Lorraine became LAF's fulcrum for fund raising. Several innovative appeals included the scheme to seek donor support through an annual raffle draw, and the establishment of off shore fund raising charities. Those provided the ethos for the collection of donor funds, undisturbed, to build a Centre of Excellence. During the ten year period some Rs. 60 Million in gross donations from 1119 individual donors were accumulated; a large chunk of it went to build the Service Centre, which comes on stream in September 2011.

The donor distribution noted in the pie chart shows that the double order of donations (sic 2009/2010) received during the year came from the community in Sri Lanka. I am grateful. Thus, the concept of LAF being a local community based charity thrives.



I am honoured to work with a small group of talented and articulate volunteers who have magnificently carried the burden and work responsibilities over the year. We collectively applaud those who have contributed, in small or large measure, towards the well being of LAF over the year.

Thank you.

H. B. (Tami) Tamitegama
Founder / President
Lanka Alzheimer's Foundation

15 August 2011

Promote the Quality of Life and the Quantity of Services

Services:

Raise Awareness



The Foundation builds awareness in the community with the intention of removing stigma. This is done through media coverage, presentations and activities organized by the Foundation throughout the year. An annual Dementia Awareness Campaign is launched 12 weeks prior to World Alzheimer's Day, which is celebrated on September 21st. The awareness desk is set up at strategic locations in Colombo and the suburbs.

Befriending/Counselling

The Foundation's volunteers provide counseling for persons with dementia and their families. The counseling extends to the provision of helpful information on understanding dementia, the progression of the disease and information on successful, stress free caregiving.

Resource Material

A monthly newsletter is circulated to family caregivers and the community at large.

A guidebook for caregivers and Help sheets on relevant topics are available.

Helpline +94 11 266 7080

forgetful? confused?

Call the Dementia Helpline +94 11 266 7080

e-mail: alzheimers@alzlanka.org website: www.alzlanka.org



The Foundation maintains a Helpline to promote contact and provide support to persons with dementia and their families. Contact information is provided through a bookmark.

Caregiver Support Group (CSG) Meeting



The CSG Activities:

- Support caregivers through discussion and sharing
- Listen and learn from care experiences narrated by caregivers
- Assist caregivers to bond with each other
- Share common concerns, responsibilities and group problem solving
- Discuss the vagaries of the progression of the disease
- Work towards caregivers' wellness
- Help to dispel misconceptions and stigma

The Foundation facilitates two caregiver support group meetings every month.

1. First Tuesday - Manasuwa Piyasa, Colombo Teaching Hospital, Colombo South from 4 p.m. to 6 p.m. (Sinhala/English)
2. First Friday - 19 Havelock Road, Colombo 5 from 4 p.m. to 6 p.m. (English/Sinhala/Tamil)

Future Services:

- Day Care Activity Centre
- Library & Resource Centre
- Secretariat
- Help sheets
- Memory Clinic
- Training Centre for Volunteers, Staff, Family Caregivers & Professional Carers
- Mobile Services

Facilitate Appropriate Training and Education

Website

www.alzilanka.org

The Foundation's website, created and maintained by the Honorary Web Consultants, Navantis Sri Lanka, provides a wealth of information in Sinhala, Tamil & English.

Training



The Foundation provides in-house consultative training for family caregivers and professional carers. Periodic workshops are conducted as well. For more information call the helpline.

Home Visits



Volunteers visit persons with dementia (PWDs) in their home environment, elders' homes and hospitals. Specific services include assessments and recommendations on case management. Family and other carers are provided information on correct caregiving methodologies. Volunteers stress on the importance of providing love, care and attention to PWDs. Carers find talking therapy ease their burden of caregiving.

Hygienic Products



The Foundation provides hygienic products (adult diapers, underpads, air mattresses, disposable gloves, masks, cotton wool, wheelchairs etc.) at subsidized rates for persons with dementia, registered with the Foundation.

Dates to Remember 2011 – 2012

July 8 – September 17

Dementia Awareness/Fund Raising Campaign

August 07

Public Lecture – Dr. S. Srikanth
Lanka Hospitals Auditorium – 6 p.m.

August 28

Memory Clinic
LAF's Service Centre – 9 a.m. to 1 p.m.

September 21 – World Alzheimer's Day

Opening of the Alzheimer's Centre – 10 a.m. to 1 p.m.

Musical Concert – St. Andrew's Scots Kirk,
73 Galle Road, Colombo 3 at 7 p.m.
Entrance by Programme Rs. 500/-

September 24

Memory Walk, Cinnamon Grand Colombo,
Angsana Spa Garden at 8 a.m.

December 02

Seasonal party for caregivers and persons with
dementia from 4 to 6 p.m.

February 25

Scrabble Tournament - 9 a.m. to 4 p.m.

Develop Activities and Services Nationally

Year in Review

Towards Healthy Living and Ageing by Tami Tamitegama

Health is not only the absence of infirmity and disease, but also a state of physical, mental and social well being. The definition, which was developed in the early 50s, by the World **Health** Organization, needs the spiritual dimension to make it a wholesome and holistic **health** template for mankind.

In addition, it should be remembered that each individual is a unique being, blessed with different genetics, lifestyles, environments, aspirations, expectations and life's continuing practices and experiences through birth to death, which may challenge good **health**.

Human beings have inherited from nature a joyful life and good **health** through life's journey. However, to maintain that inheritance without it being tarnished is a difficult challenge; unfortunately,

ill **health** is considered more natural than good **health**. Accordingly, there is continuous preoccupation with ways of overcoming ill **health**, rather than placing the same effort, and more, at maintaining good **health** – remarkable as it may seem, ageing is generally thought to be a disease!

The Lanka Alzheimer's Foundation has a Mission to provide information on lifestyles and other convictions that would provoke individuals to consider good **health** and shed all notions on ill **health**.

The art of continuous positive thinking and acting, and wearing a smile on one's face are the start up activities to nurture good **health**. The conviction that nature is always with us is the supreme catalyst to good **health**, and, finally, we need to undertake that, individually. We are our own best healers.

Alzheimer's Charity Run



The inaugural Alzheimer's Charity Run organized by the Colombo Hash House Harriettes and the Lanka Alzheimer's Foundation was held on Saturday, February 5th, 2010.

Vladimir Tamitegama, a participant in the Paris marathon was the chief guest. Vladimir's father Robert Tamitegama had dementia. Robert, uncle of Founder/President Tami Tamitegama died in a Paris hospital in April 2011.



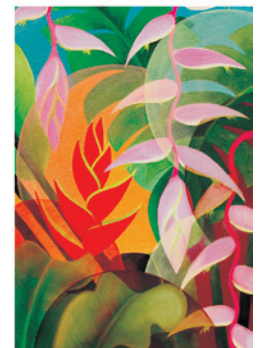
Hotel Taj Samudra were the sponsors for the venue and hospitality. On arrival at the Hotel the participants were greeted with a scrumptious afternoon tea. We extend our sincere appreciation to our generous sponsors, organizers and participants for their significant contribution.

Please join us on our journey to spread awareness of Alzheimer's and other dementias and encourage family, friends and colleagues to participate in the Alzheimer's Charity Run 2012.

The Alzheimer's Charity Run will be an annual event and take place on the first Saturday in February

Encourage Research on Causes and Cures

Greeting Card Project



The Greeting Card Project in collaboration with the renowned artist, Senake Senanayake gathered momentum during the year. Four new Greeting Cards and two Christmas Cards were added to the Foundation's card portfolio. These beautiful all purpose blank cards and personalized cards are available throughout the year. A discount is offered on bulk orders.

Public Lecture



In the two public presentations that Dr. Lynn Beattie made in Sri Lanka in November 2010, a number of new issues were highlighted. Dr. Beattie brings with her a wealth of experience in dementia consultation, research and writing. She cautioned that dementia is not necessarily a senior's affliction, in her part of the world (Canada). Dr. Beattie indicated that there are persons in the 35 – 45 year age group who have dementia.

Dr. Beattie noted that social activity and perhaps learning a new language are two, amongst other

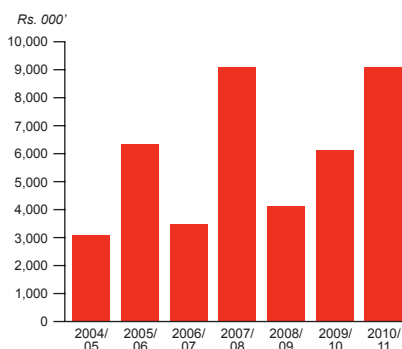
publicized activities that can delay the on-set of dementia. She highlighted the hidden social and economic costs of dementia, which are generally ignored. A family member who is deprived of going to work, as a consequence of caring for a family member with dementia, loses income and social activities. Dr. Beattie quoted the estimated dementia bill in the USA as being as high as USD 315 billion; the magnitude of which can be gauged by the fact that it is a third of the defense budget, which stands at USD 1.1 Trillion. In the light of those daunting facts, she urged greater awareness and development of sound modalities to distance and prevent dementia. We applaud her support of the Alzheimer's work worldwide.

Sustain and Share Correct Information to Combat Stigma

Treasurer's Report

Donations and fund raisers, the usual fund raising activities showed a healthy growth, which exceeded the previous year's receipts by 100%. The redoubled efforts of the fund raising team had a compensating effect on the reduced interest income. Overall, LAF had a solid year of growth and showed a 10% increase in gross receipts.

The number of donors was marginally higher than the previous year, however, their contributions were more generous. It is apparent that the undertakings of LAF and the potential of the Centre are more visible to the general community, and I expect a reasonable growth pattern in donor activity in the ensuing year.



Construction costs have consumed 90% of the gross budget set for the completion of the Service Centre of Rs.47 million. The expectation is that the final costs would be in that neighbourhood. Active efforts are being made to encourage donor response and undertakings to support specific items needed to finish equipping the Centre.

Ren Lan Mather

Ren Lan Mather
Treasurer

15 August 2011

Independent Auditor's Report

TO THE MEMBERS OF THE LANKA ALZHEIMER'S FOUNDATION

Report on the Financial Statements

We have audited the accompanying financial statements of the Lanka Alzheimer's Foundation ("the Foundation"), which comprises the balance sheet as at 31 March 2011, the statement of income and expenditure and cash flow statement for the year then ended, and notes to the financial statements thereto.

The Board of Trustees' Responsibility for the Financial Statements

The Board of Trustees is responsible for the preparation and fair presentation of these financial statements in accordance with Sri Lanka Accounting Standard for Smaller Enterprises ("SLASSE"). This responsibility includes: designing, implementing and maintaining internal control relevant to the preparation and fair presentation of financial statements that are free from material misstatement, whether due to fraud or error; selecting and applying appropriate accounting policies; and making accounting estimates that are reasonable in the circumstances.

Scope of Audit and Basis of Opinion

Our responsibility is to express an opinion on these financial statements based on our audit. We conducted our audit in accordance with Sri Lanka Auditing Standards. Those standards require that we plan and perform the audit to obtain reasonable assurance whether the financial statements are free from material misstatement.

An audit includes examining, on a test basis, evidence supporting the amounts and disclosures in the financial statements. An audit also includes assessing the accounting principles used and significant estimates made by the Board of Trustees, as well as evaluating the overall financial statement presentation.

We have obtained all the information and explanations which to the best of our knowledge and belief were necessary for the purposes of our audit. We therefore believe that our audit provides a reasonable basis for our opinion.

Opinion

In our opinion, so far as appears from our examination, the Foundation maintained proper accounting records for the year ended 31 March 2011 and the financial statements give a true and fair view of the Foundation's state of affairs as at 31 March 2011 and its surplus for the year then ended in accordance with SLASSE.

Report on Other Legal and Regulatory Requirements

These financial statements comply with the requirements of Section 151(2) Companies Act No. 07 of 2007.

[Signature]

KPMG Ford, Rhodes, Thornton & Co.
CHARTERED ACCOUNTANTS

15 July 2011
Colombo

Lanka Alzheimer's Foundation

Financial Statements 2010 - 2011

Balance Sheet

As at 31 March,	Note	2011 Rs.	2009 Rs.
Assets			
Non current assets			
Construction in progress	2	42,192,116	25,302,139
Current assets			
Interest income receivable		371,570	682,987
Short term investment	3	12,046,316	19,406,038
Cash at bank	4	4,680,490	4,061,860
Total current assets		17,098,376	24,150,885
Total assets		59,290,492	49,453,024
Funds and liabilities			
Funds			
Accumulated fund	5	12,177,992	2,453,024
Building fund	6	47,000,000	47,000,000
Total funds		59,177,992	49,453,024
Current liabilities			
Advance received		112,500	-
Total current liabilities		112,500	-
Total fund and liabilities		59,290,492	49,453,024

The annexed notes to the financial statements form an integral part of these financial statements.
The Board of Directors are responsible for preparation and presentation of these financial statements.
For and on behalf of the Board of Directors:



H. B. Tamitegama
President



Ren Lan Mather
Treasurer

15 July 2011

Statement of Income and Expenditure

For the year ended 31 March,	Note	2011 Rs.	2010 Rs.
Income			
Donations from public		6,132,934	3,568,606
Fund raising activities		2,694,540	2,819,249
Interest income on short term investments		1,448,830	3,530,438
Exchange gain		-	24,276
Project grant		-	123,000
Founder's contribution		1,237,365	455,640
Total income		11,513,669	10,521,209
Expenses			
Travel and promotion		1,230,648	916,810
Communication		268,968	263,120
Rent and utilities		60,000	60,000
Operating lease agreement		152,250	152,250
Membership fee		25,718	22,900
Bank charges		22,783	22,030
Company secretarial services		28,334	16,440
Total expenditure		1,788,701	1,453,550
Surplus before income tax expense		9,724,968	9,067,659
Income tax expense	7	-	-
Surplus for the year		9,724,968	9,067,659

The notes to the financial statements form an integral part of these financial statements.

Notes to the Financial Statements

For the year ended 31 March 2011

1. Accounting policies

1.1 Reporting entity

Lanka Alzheimer's Foundation ("the Foundation") was incorporated on 23 March 2001 as a company limited by guarantee.

Principal activities

The primary objective of the Foundation is the advancement in Sri Lanka of the well being of persons suffering from Alzheimer's and Related Disorders, and the provision of practical information to those in their senior years on active ageing.

Since the incorporation of Alzheimer's and Related Disorders Foundation of Lanka, there have been many instances where the name was abridged to read "Lanka Alzheimer's Foundation". Consequently, the Registrar of Companies has approved an official name change for public convenience and international compliance to read 'Lanka Alzheimer's Foundation', effective 25 August 2010.

1.2 Basis of preparation

(a) Statement of compliance

The financial statements of the Foundation comprise the balance sheet, statement of income and expenditure, cash flow statement and notes to the financial statements. These statements are prepared in accordance with Sri Lanka Accounting Standard for Smaller Enterprises ("SLASSE") laid down by the Institute of Chartered Accountants of Sri Lanka, and the requirements of the Companies Act No. 7 of 2007.

(b) Basis of measurement

The financial statements have been prepared on the historical cost basis. No adjustment has been made for inflationary factors in the financial statements.

(c) Functional and presentation currency

These financial statements are presented in Sri Lankan Rupees, which is the Foundation's functional currency.

(d) Use of estimates and judgments

The preparation of financial statements in conformity with SLASSE requires management to make judgments, estimates and assumptions that affect the application of accounting policies and reported amounts of assets, liabilities, income and expenses. The estimates and associated assumptions are historical experience and various other factors that are believed to be reasonable under the circumstances, the results of which form the basis of making the judgment about the carrying values of assets and liabilities that are not readily apparent from other sources. Actual results may differ from these estimates.

The estimates and underlying assumptions are reviewed on the ongoing basis. Revisions to accounting estimates are recognized in the period in which the estimates are revised affects only the financial year or in the period of the revision and future periods if the revision affects both current and future financial years.

1.3 Significant accounting policies

The accounting policies set out below have been applied consistently to all periods presented in these financial statements.

(a) Income tax expense

The Foundation is an approved charity in accordance with the Inland Revenue Act No. 10 of 2006 and subsequent amendments thereto.

(b) Income

Interest income on investments is recognized on accrual basis while the investment records at cost.

(c) Expenditure

All expenditure is accounted for on an accrual basis.

(d) Comparative information

Where necessary, comparative figures have been rearranged to confirm to the current year's presentation.

(e) Events after the balance sheet date

All material events occurring after the balance sheet date considered and where appropriate, adjustments to or disclosure are made in the financial statements.

(f) Commitments and contingencies

Contingencies are possible assets or obligations that arise from a past event and would be confirmed only on the occurrence or non-occurrence of uncertain future events, which are beyond the Foundation's control.

(g) Board of Directors' responsibility

The Board of Directors is responsible for the preparation and presentation of these financial statements in accordance with SLASSE.

2. Construction in progress

Construction is in progress on a land which is granted on a crown lease.

The Government of Sri Lanka granted a crown lease, agreement affected on 12 February 2007 on the property identified by the Municipal Assessment number 110, Ketawallamulla, Colombo 10, to the amalgamated organisation Ceylon Social Service League and Lanka Alzheimer's Foundation for 30 years effective 15 June 2004. By virtue of an agreement signed on 7 October 2008 by the Ceylon Social Services League and Lanka Alzheimer's Foundation, the Ceylon Social Services League has agreed to empower the Lanka Alzheimer's Foundation to exclusively occupy and utilise the said property, for the purpose of offering social services to the community.

Clause 10 of the said agreement does not permit the lessee to sublet, mortgage or otherwise dispose or deal with their interest in the lease without the prior consent of the Land Commissioner. Management is confident that this sublet is not in contravention of Clause 10.

Raise Funds

Notes to the Financial Statements

For the year ended 31 March 2011

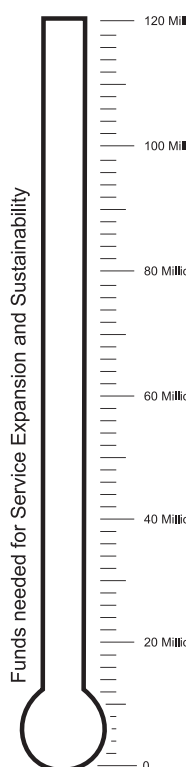
As at 31 March,

	2011 Rs.	2010 Rs.
3. Short term investments		
Fixed deposits	11,772,820	19,337,246
Savings accounts - foreign currency	122,337	44,538
Savings accounts - local currency	151,159	24,254
	<u>12,046,316</u>	<u>19,406,038</u>
4. Cash at bank		
National Development Bank PLC	4,584,240	3,972,447
Standard Chartered Bank PLC	81,437	66,137
Bank of Ceylon	14,813	23,276
	<u>4,680,490</u>	<u>4,061,860</u>
5. Accumulated fund		
Balance at the beginning of the year	2,453,024	385,365
Surplus for the year	9,724,968	9,067,659
Transfer to the building fund	-	(7,000,000)
Balance at the end of the year	<u>12,177,992</u>	<u>2,453,024</u>
6. Building fund		
Balance at the beginning of the year	47,000,000	40,000,000
Transfer from accumulated fund	-	7,000,000
Balance at the end of the year	<u>47,000,000</u>	<u>47,000,000</u>
7. Income tax expense		
The Foundation is an approved charity in accordance with the Inland Revenue Act No. 10 of 2006 and amendment thereto.		
8. Contingent liabilities and commitments		
The Foundation has no significant contingent liabilities and commitments that require adjustments to or disclose in the financial statements.		
9. Litigation and claims		
There are no litigations and claims against the Foundation as at the balance sheet date.		
10. Events occurring after the balance sheet date		
No events have occurred since the balance sheet date which would require adjustments to, or disclosure in the financial statements.		
11. Board of Trustees' responsibility for financial reporting		
The Board of Directors is responsible for the preparation and presentation of these financial statements in accordance with SLASSE.		

Stewardship of your money

For the Ten Year Period – April 2001 to March 2011

Service Centre - Building Fund and Ten Year Operating Costs



Income

Donors contributed Rs. 32,815,818. Fund raising netted Rs. 13,146,030. Interest income and net exchange gain were Rs. 16,450,560. The Founder/President contributed Rs. 5,975,657 to defray expenses.

Expenses, Allocation to the Building Fund and Accumulated Funds

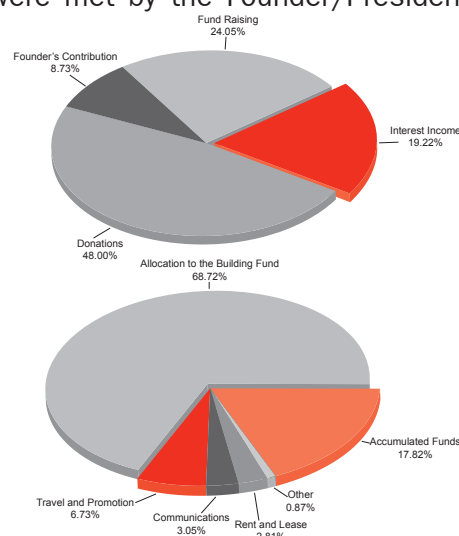
Rs. 47,000,000 were allocated to the Building Fund. Most expenses – Travel and Promotion Rs. 4,601,068; Communications Rs. 2,090,352; Rent and Lease Rs. 1,920,528; and others Rs. 599,411 were met by the Founder/President. Accumulated Funds are Rs. 12,176,706.

Income

Donations	48.00%
Interest Income	19.22%
Fund Raising	24.05%
Founder's Contribution	8.73%

Expenses, Allocation to the Building Fund and Accumulated Fund

Allocation to the Building Fund	68.72%
Travel and Promotion	6.73%
Communications	3.05%
Rent and Lease	2.81%
Other	0.87%
Accumulated Fund	17.82%





Lanka Alzheimer's Foundation

Executive Trustees:

President Tami Tamitegama
Honorary Treasurer Ren Lan Mather
Honorary Secretary Yasmin Cader
Trustees Roshni de Fonseka
Lorraine Tamitegama

Advisory Trustees:

Carlo Fonseka
Suchi Ratnatunga
Priya Fernando
Anthony A. Page
Nalini Ellawala
Penny Jayawardene
Srima Seneviratne
Pushpa Ranasinghe

Honorary Auditors:

KPMG Ford, Rhodes, Thornton & Co.
Chartered Accountants
P. O. Box 186
Colombo
Sri Lanka

Honorary Tax Consultants:

Aiyar & Co.
Chartered Accountants
65/2 Sir Chittampalam A Gardiner Mw
Colombo 02
Sri Lanka

Honorary Web Consultants:

Navantis IT (Private) Limited
Level 4, M&M Centre
341/5 Kotte Road,
Rajagiriya
Sri Lanka

Honorary Legal Advisors:

D L & F De Saram
47 Alexandra Place
Colombo 07
Sri Lanka

Architects:

Building Design Partnership
109A Gothami Road
Colombo 08
Sri Lanka

Bankers:

Standard Chartered Bank
Bambalapitiya Branch
28 Temple Lane
Sri Lanka

Bankers:

Bank of Ceylon
Borella Super Branch
Borella, Colombo 08
Sri Lanka

Bankers:

NDB Bank
Havelock Town Branch
117 Havelock Road, Colombo 5
Sri Lanka

Alzheimer's Disease International (ADI) Members

Argentina	Cyprus	Iran	Philippines	Thailand
Australia	Czech Republic	Ireland	Poland	Trinidad and Tobago
Austria	Denmark	Israel	Portugal	Turkey
Bangladesh	Dominican Republic	Italy	Puerto Rico	United Kingdom
Barbados	Egypt	Jamaica	Romania	United States
Belgium	El Salvador	Japan	Scotland	Uruguay
Bermuda	Finland	Lebanon	Singapore	Venezuela
Brazil	France	Malaysia	South Africa	Zimbabwe
Bulgaria	Germany	Malta	South Korea	
Canada	Greece	Mexico	Spain	
Chile	Guatemala	Netherlands	Sri Lanka	
PR China	Honduras	New Zealand	Sweden	
Columbia	Hong Kong SAR	Nigeria	Switzerland	
Costa Rica	Hungary	Pakistan	Syria	
Croatia	India	Panama	TADA Chinese	
Cuba	Indonesia	Peru	Taipei	

Lanka Alzheimer's Foundation

110, Ketawalamulla Lane
Colombo 10, Sri Lanka
Helpline + 94 11 2667080; General Line +94 11 2667081
E-mail: alzheimers@alzlanka.org
Website: www.alzlanka.org



Lanka Alzheimer's Foundation

Become a Friend of the Lanka Alzheimer's Foundation (LAF)

**Please support the work of LAF by making a donation
or leaving a legacy**

- ☐ I wish to make a single donation
- ☐ I wish to make a monthly/annual donation to
the Lanka Alzheimer's Foundation by a
Standing Order

Account Number: 01 1185292 01
Swift Code: SCBLLKLX
Standard Chartered Bank
Bambalapitiya Branch
28 Temple Lane
Colombo 3
Sri Lanka

- ☐ I wish to leave a legacy. Please send me
further information

Amount (LKR/USD/GBP/Other)

Cheque No:.....

Name:

Address:.....

Country:.....

Telephone:.....

Mobile:

E-mail:

Signature:.....

Date:.....

Cheques should be crossed and made payable to the
Lanka Alzheimer's Foundation and sent to:

Lanka Alzheimer's Foundation
110, Ketawalamulla Lane
Colombo 10
Sri Lanka



Lanka Alzheimer's Foundation

There are 35.6 million
people in the world with
dementia. That number is
set to rise to 65.7 million
by 2030 and 115.4 million
by 2050. We need to take
action **TODAY** to ensure
that there will be help for
people with dementia and
their carers **TOMORROW**

Please turn over to find out
how you may help

Layout of the Dementia Services
and Information Centre

